

EXYS-4060



Multi-Constellation GNSS Vehicle Tracker

The EXYS-4060 is a multi-constellation GNSS tracker for vehicle use. Positioning exploits all common GNSS constellations in the L1 band (GPS, GLONASS, GALILEO) in a synergistic way to attain a high level of precision and robustness, aided by an inertial navigation system to cover situations where GNSS is unavailable (e.g. within tunnels).

The rugged cabinet of the EXYS-4060 is provided with flanges that allow for an easy mounting of the tracker either in the cabin or in the trunk of the vehicle. External antennas to be mounted on the vehicle are provided, such that better GNSS performance can be achieved under weak signal conditions. Power is provided by the vehicle's power supply, thus no batteries are required.

Ease of use is one of the main targets of the EXYS-4060 tracker. Once the device is installed and configured it works autonomously. Vehicle drivers are not required to do anything to use it, they don't even need to be aware that the device is installed at all. Location services can be provided either by the data server hosted by Eclexys or installed at customer's premises. Thanks to its ease of use, ruggedness and low operating costs, the EXYS-4060 tracker is an excellent choice for fleet managers and small business owners.

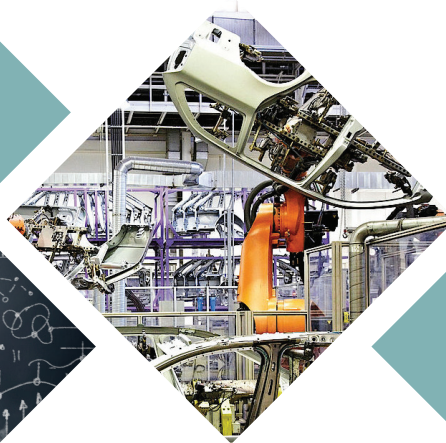
Features

- Easy to use, low maintenance required beyond installation and configuration.
- Rugged cabinet, can be mounted in the cabin or in the trunk of the vehicle.
- Powered by the vehicle power supply, no batteries required.
- Adaptive location updates: 1s to 60s updates depending on dynamics.
- External antennas for increased accuracy and availability.
- Open, well documented communication protocol (based on NMEA standard).

Applications

- Fleet management.
- Covert vehicle tracking.
- Long-term vehicle monitoring.
- Securing property.
- Geofencing, speed alerts.
- Safety of individuals.

ECLEXYs
When Passion Meets Technology



Specifications

Physical Specs

Material: die-cast aluminum enclosure
Dimensions (LxWxH): 100 x 55 x 37 mm
Weight: 180 grams
GPS Antenna Conn.: SMA
Cellular Antenna Conn.: SMA
Power Connector: 4-pin 3mm Molex
Data Connector: 10-pin 3mm Molex

Electrical Specs

Operating Voltage: 8 to 30V DC
Power Consumption: (typical, @ 12.8 V DC)

- Operating: 95mA (avg), 680mA (peak Tx)
- Standby 2 (SMS/UDP Wake-Up): 24mA
- Standby 1 (Local Wake-Up): 13mA
- Sleep (Ignition Only Wake-Up): <1mA

Environmental Specs

Operating: -30°C to 85°C
Storage: -40°C to 85°C
Humidity: 5% to 95%, non-condensing
Shock and Vibration: SAE J1455
EMC/EMI: SAE J1113

GNSS Technology

STM Teseo III: GPS/Galileo/Glonass/Beidou receiver:
50-Channel L1 C/A Code, WAAS/SBAS
Sensitivity: -161dBm Tracking, Navigation, Reacquisition
-147dBm Cold Start (no aiding)

Horizontal Accuracy: 2.5m, 2.0m SBAS (CEP 50%)
Time-to-First-Fix: 27s (@ -147dBm, Cold Start)

Communication -- Telit xxx G3 modem

Quad-Band:

- GSM 850 / 900 / 1800 / 1900 MHz
- Class 4 (2 W) for 850/900 MHz
- Class 1 (1 W) for 1800/1900 MHz

GPRS:

- Class 10 (4 downlink, 2 uplink, max. 5)
- Mobile Station Class B

Sensitivity: -110 dBm (typ.) @850/900 MHz
(25°C) -109 dBm (typ.) @1800/1900 MHz

Inputs/Outputs

Digital Inputs: 5 (3 hi Z, 2 low Z)

Analog Input: 1

Relay Drive Outputs: 4 (150mA max. each)

Switched 12V Input: 1 (500 mA max.)

LED Drive Output: 1

RS-232 Port: 1 (5-wire)

1-Wire Port: Dallas iButton, Temp Sensors

Status LEDs: 2

Antenna: SMA Connectors for GNSS and Cellular

Carrier/Regulatory Approvals

T-Mobile, FCC, PTCRB, RoHS Compliant

Other Supported Networks

SWISSCOM, TDC, AT&T, O2, TIM, WIND, Orange,
Vodafone, Telcel and many others

CONTACT US

Address

ECLEXYS Sagl
Via dell' Inglese 6
CH-6826 Riva San Vitale (TI)
Switzerland

Contact

Phone +41 91 600 00 00
Fax +41 91 600 00 01
www.eclexys.com
office@eclexys.com



ECLEXYS



EXPERIENCE



SUPPORT



NETWORK



DLT



TSP



CYBER SECURITY



IOT



SATELLITE



CLOUD